

Lesson 4-9
Precision

What does **precision** mean to you?

accurate

on point

specific

exact

on the dot

Precision

In measurement, precision refers to its degree of accuracy or exactness.

List some examples of when we need to be precise in measurement:

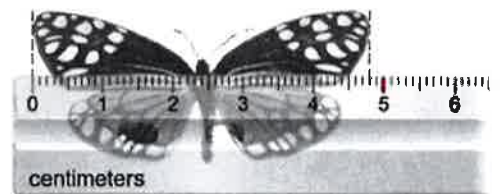
- payment
- mixing chemicals
- medicine

List some examples of when we can estimate in measurement:

- size of animal, tree, building
- golf shot
- distance between towns
-

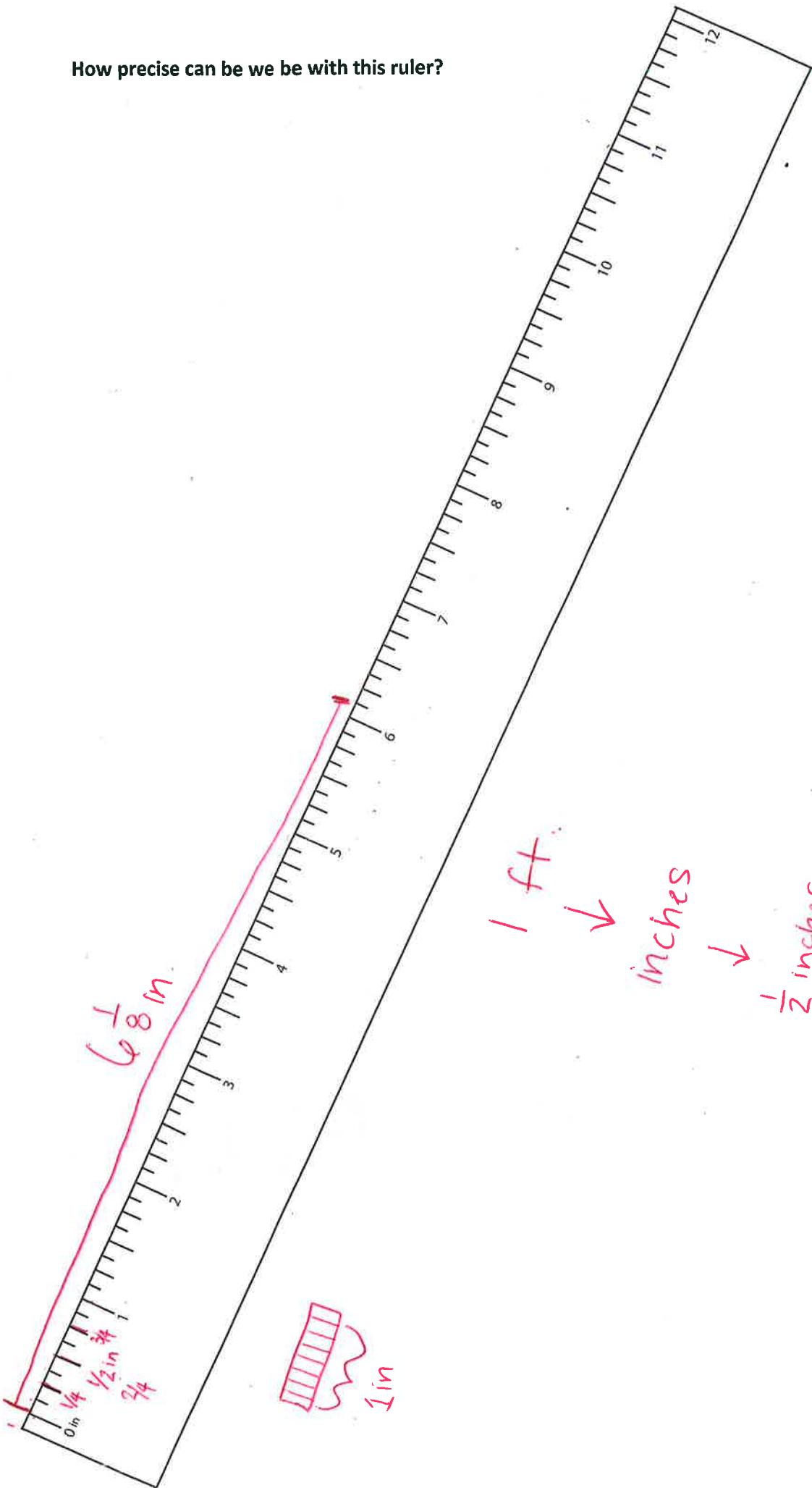
You can estimate the length of the butterfly as about 5 cm.

A more precise measurement is 48 mm, or 4.8 cm



The measurement tool used determines how precise your measurement can be.

How precise can we be with this ruler?



$6 \frac{1}{8}$ in.



1 ft

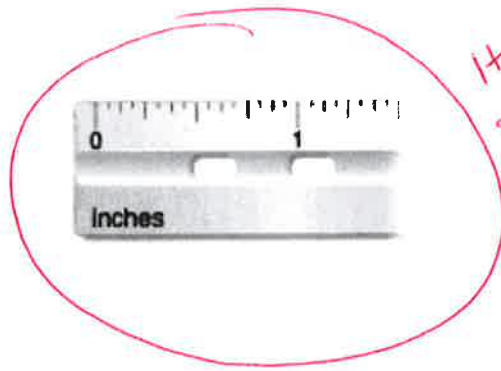
inches

$\frac{1}{2}$ inches

$\frac{1}{4}$ inches

$\frac{1}{8}$ inches

Which ruler will allow our measurement to be more precise?

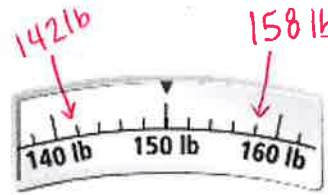


It has small measurements

What is the greatest precision possible with the measurement tools below?



125°
475°
25°

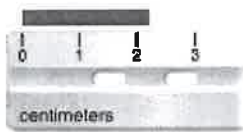


142 lb
158 lb
2 lb

Choose the more precise measurement.

2 c OR 12 fl oz 2.5 L OR 3 L 9.8 km OR 7.87 km

Find the length of each segment to the greatest precision possible.



2 cm



1.9 cm or 19 mm

You know that 12 in. equals 1 ft. Does this mean that the two measurements are equally precise? Explain.

No, inches are more precise than feet because they are a smaller unit.

